

# Natural changes of population 1961 – 2022

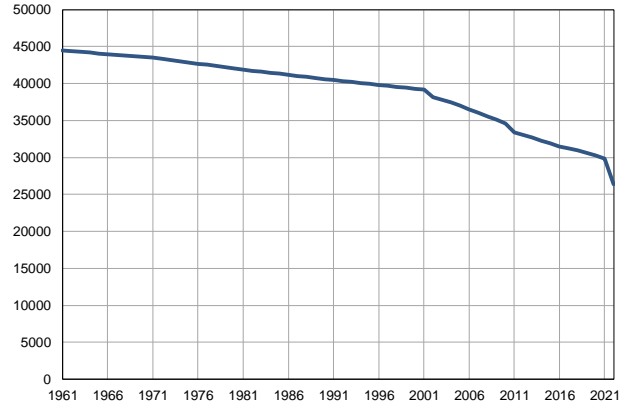
Profile  
July 2023

## Bačka Topola

	1961	2022
Population size	44466	26345
Livebirths, Number	669	227
Deaths, Number	437	560
Natural increase, Number	232	-333
Infants deaths, Number	33	0
Livebirths, per 1,000 population	15	9
Deaths, per 1,000 population	10	21
Natural increase, per 1,000 population	5	-13
Infants deaths, per 1,000 livebirths	49	0

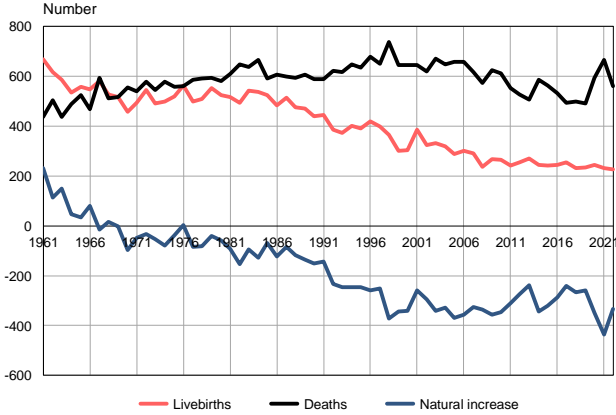
Source: Vital Statistics, SORS

Population size, 1961–2022



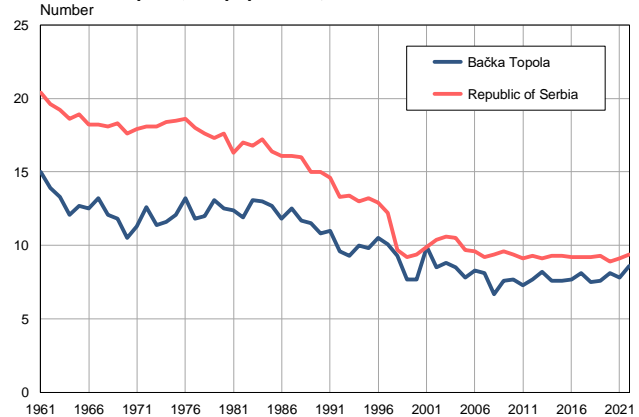
Source: Vital Statistics, SORS

Livebirths, deaths and natural increase, 1961–2022



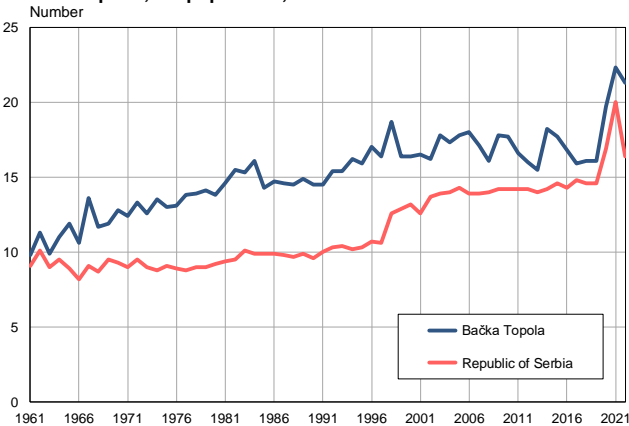
Source: Vital Statistics, SORS

Livebirths per 1,000 population, 1961–2022



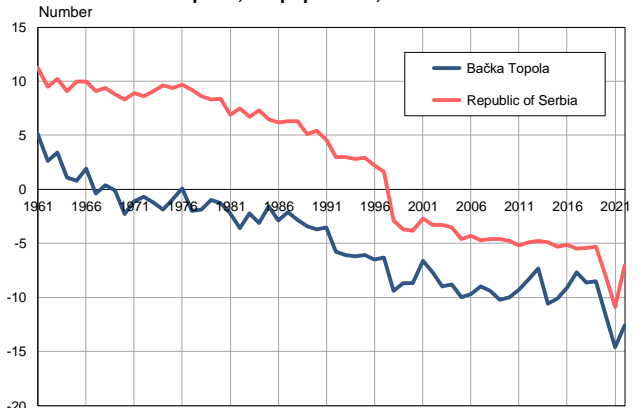
Source: Vital Statistics, SORS

Deaths per 1,000 population, 1961–2022



Source: Vital Statistics, SORS

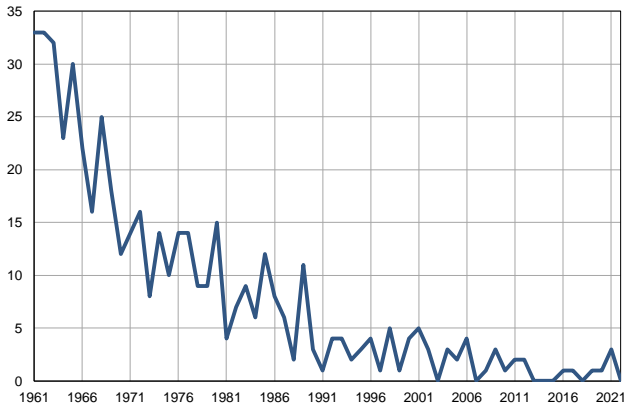
Natural increase per 1,000 population, 1961–2022



Source: Vital Statistics, SORS

**Infants deaths, 1961–2022**

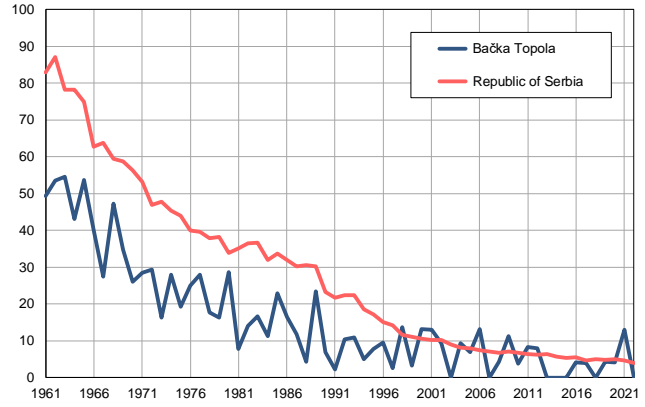
Number



Source: Vital Statistics, SORS

**Infants deaths per 1,000 livebirths, 1961–2022**

Number



Source: Vital Statistics, SORS

**Table. Natural changes of population, Bačka Topola**

Year	Number of population	Livebirths	Deaths	Natural increase	Infants deaths	per 1000 population			Infant deaths per 1000 livebirths
						Livebirths	Deaths	Natural increase	
1961	44466	669	437	232	33	15.0	9.8	5.2	49.3
1962	44370	617	503	114	33	13.9	11.3	2.6	53.5
1963	44274	587	438	149	32	13.3	9.9	3.4	54.5
1964	44179	534	488	46	23	12.1	11.0	1.1	43.1
1965	44083	559	524	35	30	12.7	11.9	0.8	53.7
1966	43987	548	467	81	22	12.5	10.6	1.9	40.1
1967	43891	581	595	-14	16	13.2	13.6	-0.4	27.5
1968	43795	528	513	15	25	12.1	11.7	0.4	47.3
1969	43700	517	518	-1	18	11.8	11.9	-0.1	34.8
1970	43604	459	556	-97	12	10.5	12.8	-2.3	26.1
1971	43508	493	541	-48	14	11.3	12.4	-1.1	28.4
1972	43346	544	578	-34	16	12.6	13.3	-0.7	29.4
1973	43184	491	545	-54	8	11.4	12.6	-1.2	16.3
1974	43022	500	579	-79	14	11.6	13.5	-1.9	28.0
1975	42860	520	557	-37	10	12.1	13.0	-0.9	19.2
1976	42699	562	560	2	14	13.2	13.1	0.1	24.9
1977	42537	500	585	-85	14	11.8	13.8	-2.0	28.0
1978	42374	509	591	-82	9	12.0	13.9	-1.9	17.7
1979	42213	554	594	-40	9	13.1	14.1	-1.0	16.2
1980	42050	524	582	-58	15	12.5	13.8	-1.3	28.6
1981	41889	518	610	-92	4	12.4	14.6	-2.2	7.7
1982	41747	495	649	-154	7	11.9	15.5	-3.6	14.1
1983	41606	543	637	-94	9	13.1	15.3	-2.2	16.6
1984	41464	538	667	-129	6	13.0	16.1	-3.1	11.2
1985	41323	524	592	-68	12	12.7	14.3	-1.6	22.9
1986	41181	484	607	-123	8	11.8	14.7	-2.9	16.5
1987	41040	515	599	-84	6	12.5	14.6	-2.1	11.7
1988	40898	477	595	-118	2	11.7	14.5	-2.8	4.2
1989	40757	470	606	-136	11	11.5	14.9	-3.4	23.4
1990	40615	439	589	-150	3	10.8	14.5	-3.7	6.8
1991	40473	445	588	-143	1	11.0	14.5	-3.5	2.2
1992	40343	387	621	-234	4	9.6	15.4	-5.8	10.3
1993	40213	372	618	-246	4	9.3	15.4	-6.1	10.8
1994	40083	402	648	-246	2	10.0	16.2	-6.2	5.0
1995	39953	391	636	-245	3	9.8	15.9	-6.1	7.7
1996	39823	420	678	-258	4	10.5	17.0	-6.5	9.5
1997	39694	399	651	-252	1	10.1	16.4	-6.3	2.5
1998	39564	366	738	-372	5	9.3	18.7	-9.4	13.7
1999	39434	302	646	-344	1	7.7	16.4	-8.7	3.3
2000	39304	304	646	-342	4	7.7	16.4	-8.7	13.2
2001	39174	387	645	-258	5	9.9	16.5	-6.6	12.9
2002	38162	323	619	-296	3	8.5	16.2	-7.7	9.3
2003	37824	332	672	-340	0	8.8	17.8	-9.0	0.0
2004	37427	320	647	-327	3	8.5	17.3	-8.8	9.4
2005	37005	289	659	-370	2	7.8	17.8	-10.0	6.9

**Table. Natural changes of population, Bačka Topola**

Year	Number of population	Livebirths	Deaths	Natural increase	Infants deaths	per 1000 population			Infant deaths per 1000 livebirths
						Livebirths	Deaths	Natural increase	
2006	36550	302	659	-357	4	8.3	18.0	-9.7	13.2
2007	36051	292	618	-326	0	8.1	17.1	-9.0	0.0
2008	35575	237	573	-336	1	6.7	16.1	-9.4	4.2
2009	35099	267	624	-357	3	7.6	17.8	-10.2	11.2
2010	34611	265	612	-347	1	7.7	17.7	-10.0	3.8
2011	33407	243	553	-310	2	7.3	16.6	-9.3	8.2
2012	33028	254	528	-274	2	7.7	16.0	-8.3	7.9
2013	32689	269	507	-238	0	8.2	15.5	-7.3	0.0
2014	32305	244	587	-343	0	7.6	18.2	-10.6	0.0
2015	31884	243	564	-321	0	7.6	17.7	-10.1	0.0
2016	31517	244	531	-287	1	7.7	16.8	-9.1	4.1
2017	31210	254	495	-241	1	8.1	15.9	-7.7	3.9
2018	30927	232	499	-267	0	7.5	16.1	-8.6	0.0
2019	30628	234	492	-258	1	7.6	16.1	-8.5	4.3
2020	30279	245	595	-350	1	8.1	19.7	-11.6	4.1
2021	29853	232	667	-435	3	7.8	22.3	-14.6	12.9
2022	26345	227	560	-333	0	8.6	21.3	-12.6	0.0

Source: Vital Statistics, SORS

## Definitions

### Population size

Number of population in the respective year. The data on the number of population in 1961, 1971, 1981 and 1991 are census data, while for the inter-census years the number of population was calculated as an average inter-census difference. From 2002 are given the population estimates that were calculated according to the census of population results and the annual statistics of natural mechanical population movements.

### Livebirths

Absolute number of live births in the course of a year. Live born child means a child giving vital signs after birth (breathing, i.e. heartbeat), even for the shortest time, regardless the mother's pregnancy duration.

### Deaths

Absolute number of deaths in the course of a year. Deceased is a person that whenever after having been born live, shows permanently stopped vital signs.

### Natural increase

Natural population increase is the number of live births minus the number of deaths.

### Infants deaths

Absolute number of infants deaths in the course of a year. Deceased infant is a child that after having been born live and before aged one year, shows permanently stopped vital signs.

### Livebirths, per 1 000 population

Livebirths rate is the ratio of the number of live births and the population size in the respective year. The number of live births is divided by the population size and then multiplied by 1000.

### Deaths, per 1 000 population

General mortality rate represents the ratio between the number of deaths and the population size in the respective year. The number of deaths is divided by population size and then multiplied by 1000.

### Natural increase, per 1 000 population

Natural population increase rate is the difference between the number of live births and the number of deaths, in relation to the population size in the respective year.

Natural population increase rate = (number of live births - number of deaths) / population size \* 1000

### Infants deaths, per 1 000 livebirths

Infant mortality rate is the ratio of deceased children under 1 year of age and live births in the respective year. The mortality rate is expressed per 1000 live births.

Infant mortality rate = (number of deceased children under 1 year of age / number of live births) \* 1000

## Additional info:



Download all database data in Excel format:

[Data](#)



DevInfo profiles:

[devinfo.stat.gov.rs/SerbiaProfileLauncher/?lang=en](http://devinfo.stat.gov.rs/SerbiaProfileLauncher/?lang=en)



DevInfo online database:

[devinfo.stat.gov.rs/vitalna](http://devinfo.stat.gov.rs/vitalna)



For additional information or questions please contact:

[devinfo@stat.gov.rs](mailto:devinfo@stat.gov.rs)